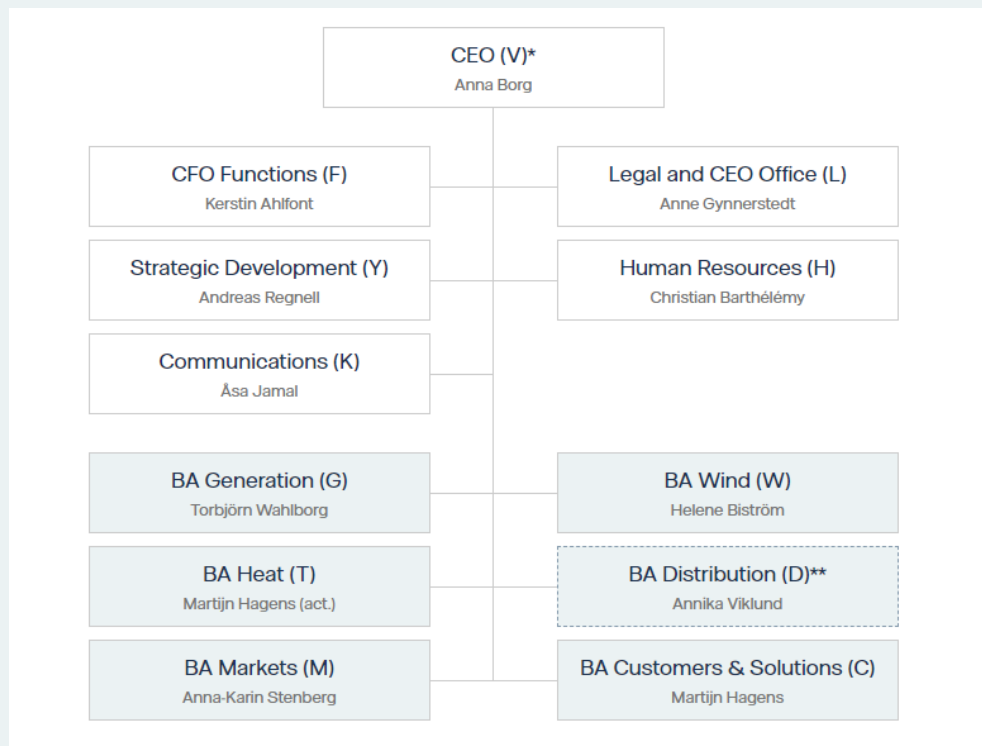
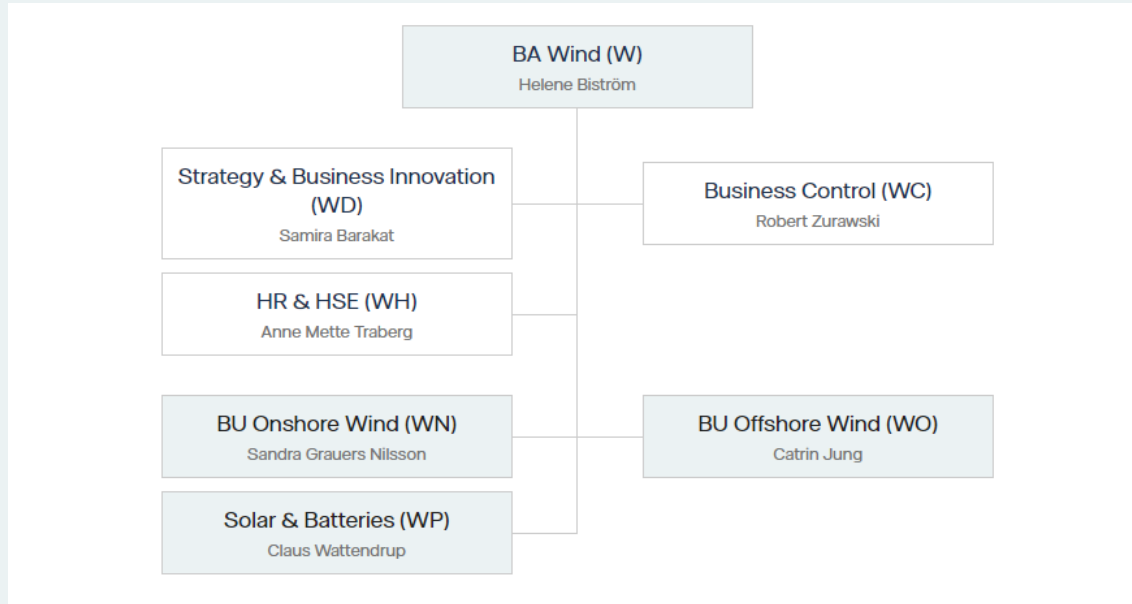


# Vattenfall Group organisation



# Vattenfall BA Wind organisation



# VESTERHAV PROJECTS ORG CHART TG3-TG5

Document Owner: Project Management Office  
 WO-PP, please contact in case of questions  
 Last updated: 29/11/2022

- Disclaimer:**
- Only roles >50% are shown, some roles excluded for clarity, some roles have multiple FTEs
  - CCM to take lead commercial role if no CPM
  - Asset Manager role included if partner is part of setup
  - EPC Director will take the "execution" scope of the H&S Coordinator legal role in both PO and MD
  - Technical Authorities are involved based on their respective technical area and demand (see HoW)

