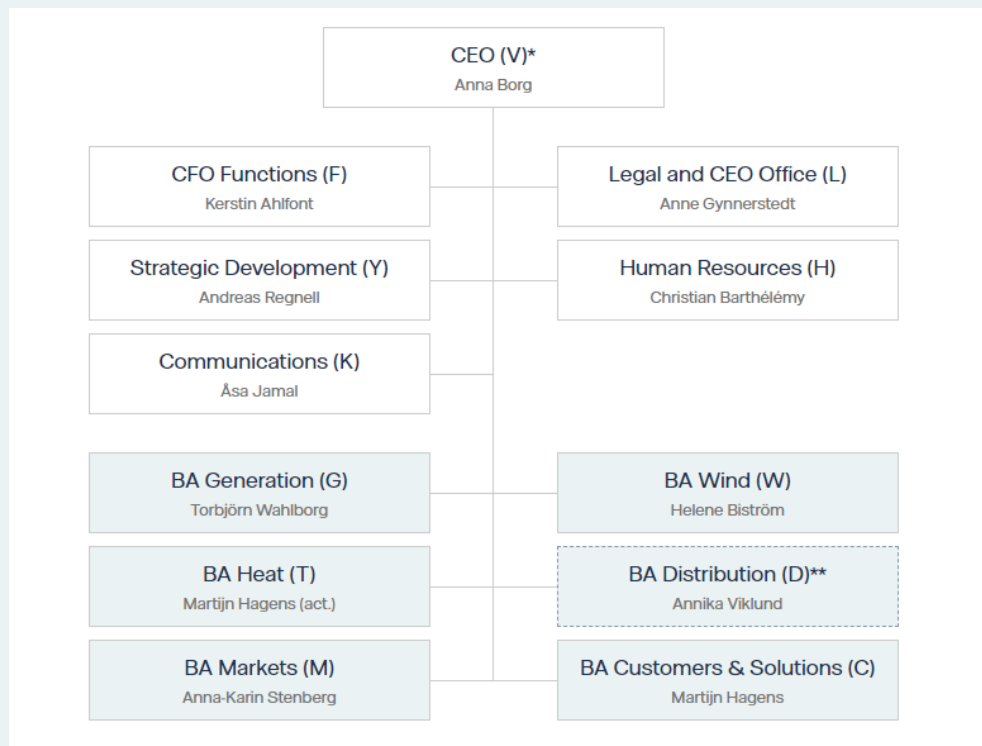
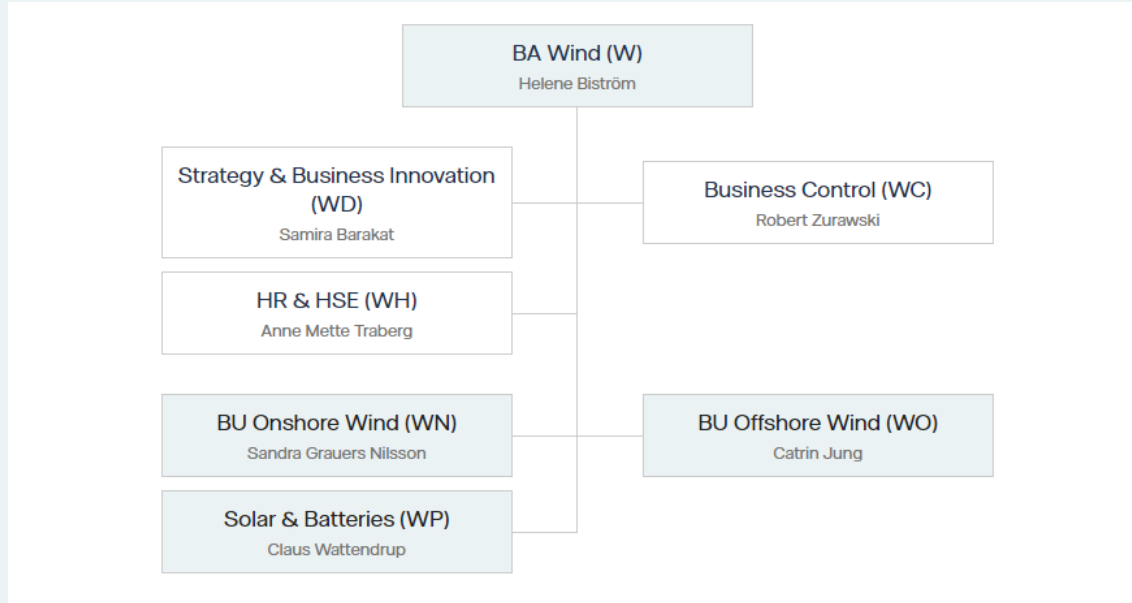


Vattenfall Group organisation



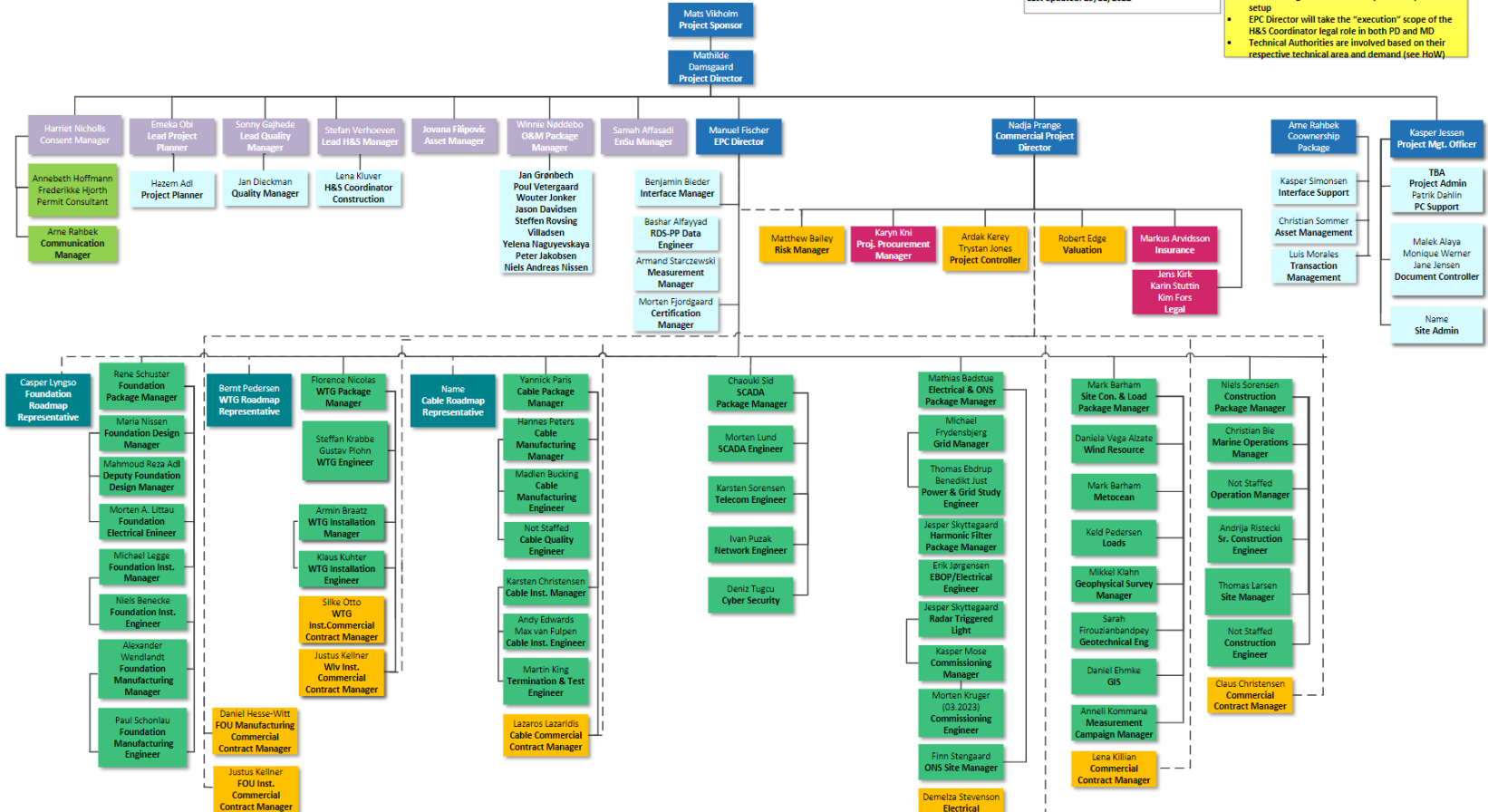
Vattenfall BA Wind organisation



VESTERHAV PROJECTS ORG CHART TG3-TG5

Document Owner: Project Management Office
 WO-PP, please contact in case of questions
 Last updated: 29/11/2022

- Disclaimer:**
- Only roles >50% are shown, some roles excluded for clarity, some roles have multiple FTEs
 - CCM to take lead commercial role if no CPM
 - Asset Manager role included if partner is part of setup
 - EPC Director will take the "execution" scope of the H&S Coordinator legal role in both PO and MD
 - Technical Authorities are involved based on their respective technical area and demand (see HoW)



- Project Management Team
- PD Direct Reports
- Product Management
- Project Staff Functions
- Package Management / Project Engineering
- Consent, En&S, Com. / Stakeholder Management
- Group Staff Functions
- Commercial Management
- O&M Management